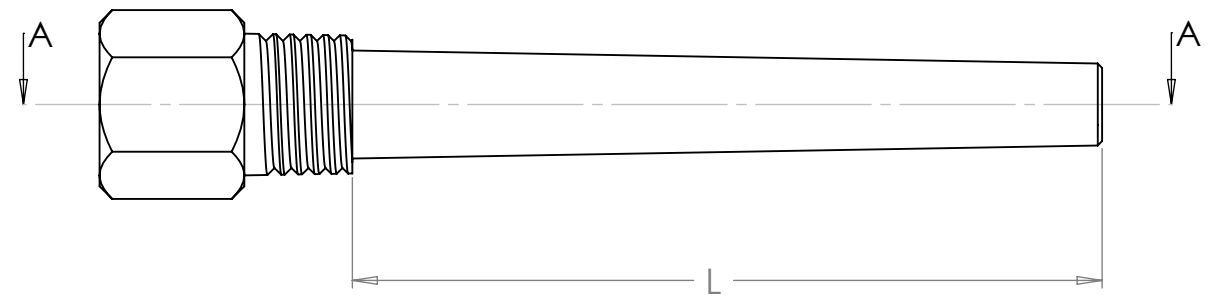
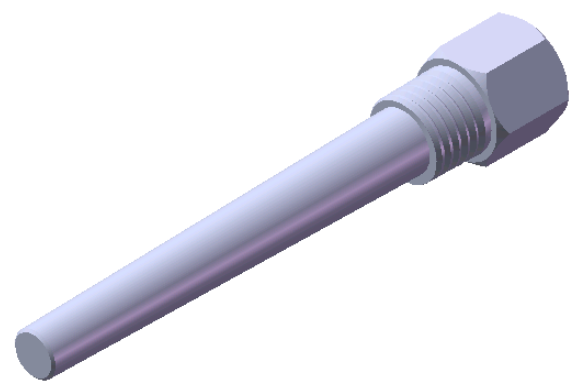


Section A:A



*Note : Material certification available if required



<u>MATERIAL</u>	<u>LENGTH</u> $\leftarrow L \rightarrow$
316L Other.....
* See Note	

<u>INSTRUMENT FITTING</u>	<u>PROCESS FITTING</u>	<u>BORE DIMENSIONS</u>
1/4" BSP 1/2" BSP Other.....	1/2" BSP 3/4" BSP Other.....	6.5mm Other.....

SERVOTECH INSTRUMENTATION LTD
6 WILLIAM PICKERING DRIVE
ALBANY
AUCKLAND, NEW ZEALAND
PHONE: 64-9-415 8362
FAX: 64-9-415 8361
EMAIL: sales@servotech.co.nz
WEBSITE: www.servotech.co.nz

UNLESS OTHERWISE SPECIFIED,
ALL DIMENSIONS ARE IN mm

THIS DRAWING IS EXCLUSIVE
PROPERTY OF SERVOTECH
INSTRUMENTATION LTD AND
SHOULD NOT BE COPIED OR
HANDLED TO OTHER PARTIES
WITHOUT PRIOR PERMISSION.

 <i>Temperature management by design</i>		
TITLE: SCREW IN SOLID DRILLED THERMOWELL		
DRAWN BY:		DATE:
GENERIC NO. T21		A4
SCALE: NTS	MATERIAL:	