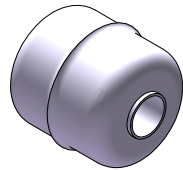
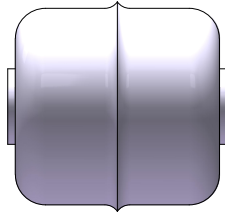
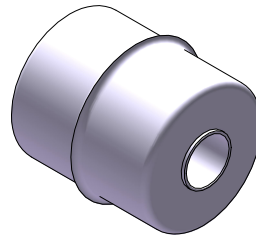
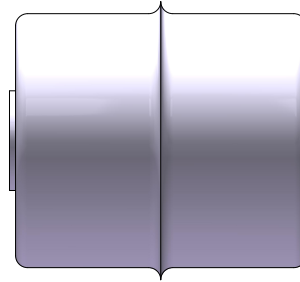


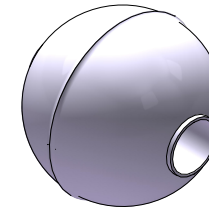
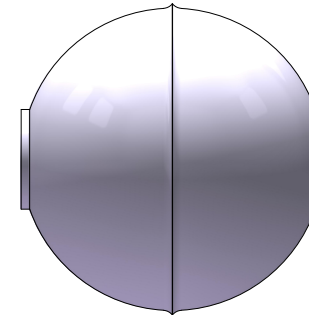
S1



S3





S4



FLOAT SPECIFICATIONS

TYPE	DIAMETER	HEIGHT	BORE	SPECIFIC GRAVITY	MAX PRESSURE (kg/cm <sup>2</sup> )	WEIGHT (g)	MATERIAL/COLOUR	MAX TEMP (°C)
S1	29	29	9.5	E > 0.73	10	8	316 STAINLESS STEEL	120
S3	45	55	15	E > 0.65	12	36	316 STAINLESS STEEL	120
S4	52	52	15	E > 0.55	30	33	316 STAINLESS STEEL	120

NOTE: Floats are not to scale

SERVOTECH INSTRUMENTATION LTD 6 WILLIAM PICKERING DRIVE ALBANY AUCKLAND, NEW ZEALAND PHONE: 64-9-415 8362 FAX: 64-9-415 8361 EMAIL: sales@servotech.co.nz WEBSITE: www.servotech.co.nz				
	TITLE: LIQUID LEVEL FLOAT SPECIFICATIONS			
UNLESS OTHERWISE SPECIFIED, ALL DIMENSIONS ARE IN mm	DRAWN BY: DV		APPROVED BY: KV	
	DATE: 07/12/2023		A4	
THIS DRAWING IS EXCLUSIVE PROPERTY OF SERVOTECH INSTRUMENTATION LTD AND SHOULD NOT BE COPIED OR HANDED TO OTHER PARTIES WITHOUT PROPER PERMISSION.			SCALE: NTS	
			MANUFACTURED IN NEW ZEALAND	